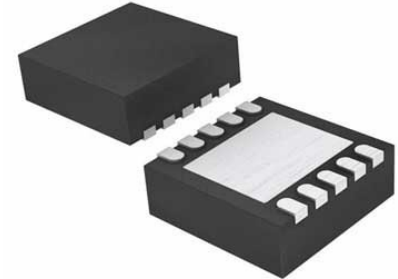


36V, 2A, 2.8MHz Step-Down Switching Regulator; Package: DFN; No of Pins: 10;
Temperature Range: -40°C to +125°C

Manufacturers	Analog Devices, Inc
Package/Case	QFN-10
Product Type	Power Management ICs
RoHS	Pb-free Halide free
Lifecycle	



Images are for reference only

Please submit RFQ for LT3684EDD#PBF or [Email to us: sales@ovaga.com](mailto:sales@ovaga.com) We will contact you in 12 hours.

[RFQ](#)

General Description

The LT3684 is an adjustable frequency (300kHz to 2.8MHz) monolithic buck switching regulator that accepts input voltages up to 34V (36V maximum). A high efficiency 0.18Ω switch is included on the die along with a boost Schottky diode and the necessary oscillator, control and logic circuitry. Current mode topology is used for fast transient response and good loop stability. The LT3684's high operating frequency allows the use of small, low cost inductors and ceramic capacitors resulting in low output ripple while keeping total solution size to a minimum. The low current shutdown mode reduces input supply current to less than 1μA while a resistor and capacitor on the RUN/SS pin provide a controlled output voltage ramp (soft-start). A power good flag signals when VOUT reaches 90% of the programmed output voltage. The LT3684 is available in 10-Pin MSOP and 3mm × 3mm DFN packages with Exposed Pads for low thermal resistance.

Features

Wide Input Range: 3.6V to 34V Operating, 36V Maximum

2A Maximum Output Current

Adjustable Switching Frequency: 300kHz to 2.8MHz

Low Shutdown Current: $I_Q < 1\mu A$

Integrated Boost Diode

Power Good Flag

Saturating Switch Design: 0.18 Ω On-Resistance

1.265V Feedback Reference Voltage

Output Voltage: 1.265V to 20V

Soft-Start Capability

Small 10-Pin Thermally Enhanced MSOP and (3mm \times 3mm) DFN Packages

Application

Automotive Battery Regulation

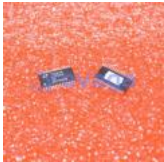
Power for Portable Products

Distributed Supply Regulation

Industrial Supplies

Wall Transformer Regulation

Related Products



[LT3763EFE](#)

Analog Devices, Inc
TSSOP28



[LTC4417IUF](#)

Analog Devices, Inc
QFN-24



[LTC1966CMS8#PBF](#)

Analog Devices, Inc
MSOP-8P



[LTM8045EY#PBF](#)

Analog Devices, Inc
BGA40



[LT1038CK](#)

Analog Devices, Inc
TO-3



[LTC3440EMS](#)

Analog Devices, Inc
MSOP10



[LTC2990IMS#PBF](#)

Analog Devices, Inc
10MSOP



[LT4295IUFD#PBF](#)

Analog Devices, Inc
28-WFQFN