

MCU 16-bit C166 CISC/RISC ROMLess 3.3V

Manufacturers	<a href="#">Infineon Technologies Corporation</a>
Package/Case	TQFP-100
Product Type	Embedded Processors & Controllers
RoHS	
Lifecycle	



Images are for reference only

Please submit RFQ for SAB-C165-LF or [Email to us: sales@ovaga.com](mailto:sales@ovaga.com) We will contact you in 12 hours.

[RFQ](#)

## General Description

SAB-C165-LF is a microcontroller unit (MCU) from Infineon Technologies. It belongs to the 16-bit SAB 8051 family of MCUs and is designed for high-speed embedded control applications.

### Features

16-bit C166S V2 CPU core with a maximum operating frequency of 33 MHz

64 KB on-chip flash memory and 4 KB on-chip RAM

Two UARTs, two CAN 2.0B controllers, two SPIs, and two I2C interfaces

Two 16-bit timers, one watchdog timer, and one capture/compare unit

8-channel 10-bit ADC

Low-power consumption with several power-saving modes

Operating voltage range: 3.0 V to 5.5 V

Temperature range: -40°C to +125°C

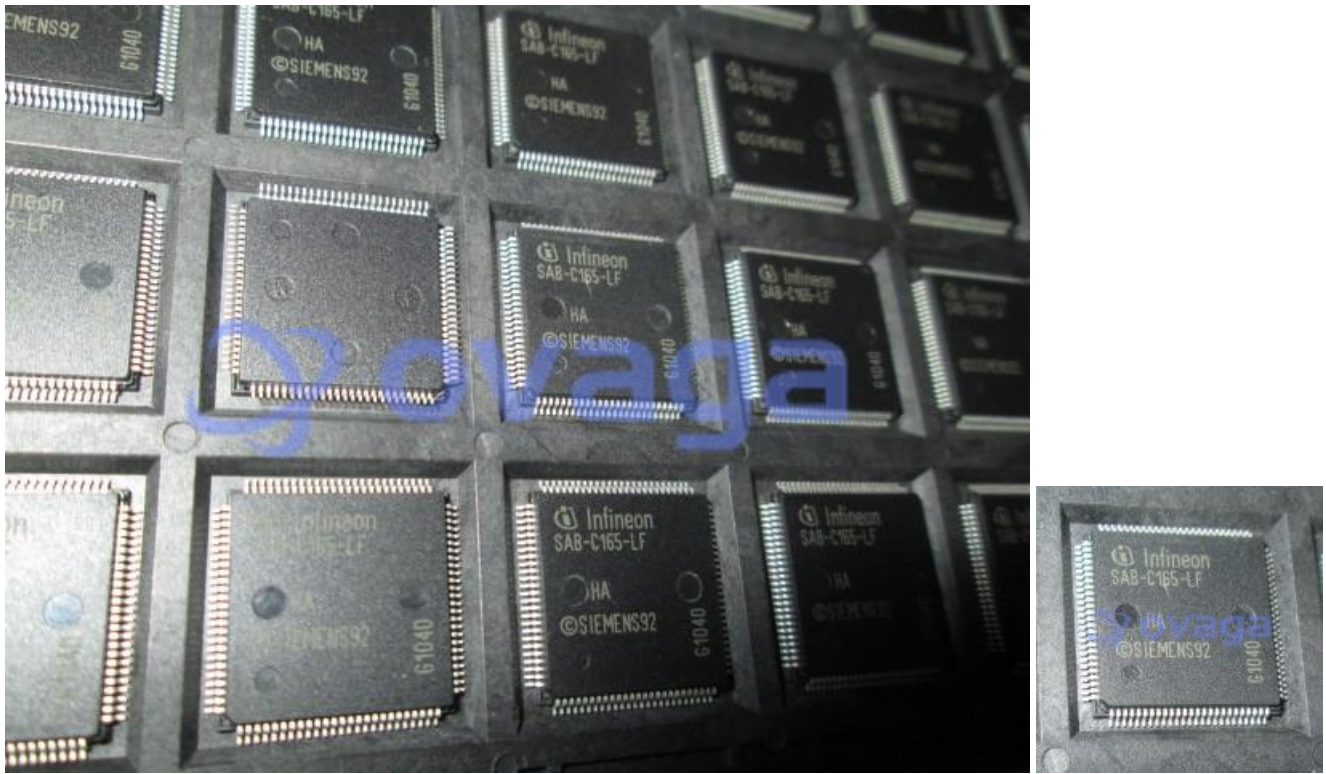
### Application

NXP (formerly Philips) P89C668HBA/00, P89C668HFA/00, and P89C668HBA/01

Atmel AT89C51CC03UA and AT89C51CC03CA

Infineon C166S V2 derivatives such as SAB-C161S-LM, SAB-C161S-LF, and SAB-C161S-4R25M

STMicroelectronics ST10F167 and ST10F168



## Related Products



### [SAK-XC164CS-32F40F](#)

Infineon Technologies Corporation  
TQFP-100



### [SAB-C167SR-LM](#)

Infineon Technologies Corporation  
DC00 PACKAGE QFP 144PIN TRAY



### [SAK-C167CS-L40M](#)

Infineon Technologies Corporation  
MQFP-144



### [SAK-C167SR-LM](#)

Infineon Technologies Corporation  
QFP-160



### [SAF-C164CI-8EM](#)

Infineon Technologies Corporation  
QFP-80



### [SAF-XC161CJ-16F40F](#)

Infineon Technologies Corporation  
TQFP144



### [SAK-C164CL-8RM](#)

Infineon Technologies Corporation  
QFP80



### [SAK-XC161CJ-16F40F](#)

Infineon Technologies Corporation  
TQFP-144