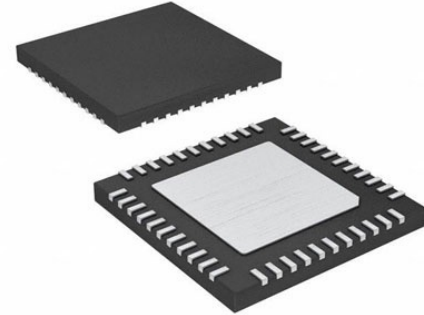


2-Bit 20 Mb/s Dual-Supply Level Translator

Manufacturers	ON Semiconductor, LLC
Package/Case	UQFN1.2x1.4-8
Product Type	Integrated Circuits (ICs)
RoHS	Pb-free Halide free
Lifecycle	



Images are for reference only

Please submit RFQ for NLSX4302EBMUTCG or [Email to us: sales@ovaga.com](mailto:sales@ovaga.com) We will contact you in 12 hours.

[RFQ](#)

General Description

The NLSX4302E is a 2-bit configurable dual supply bidirectional auto sensing translator that does not require a directional control pin. The VCC IO and VL IO ports are designed to track two different power supply rails, VCC and VL respectively. Both the VCC and VL supply rails are configurable from 1.5 V to 5.5 V. This allows voltage logic signals on the VL side to be translated into lower, higher or equal value voltage logic signals on the VCC side, and vice versa. The NLSX4302E translator uses external pullup resistors on the IO lines. The external pullup resistors are used to pull up the IO lines to either VL or VCC. The NLSX4302E is an excellent match for opendrain applications such as the I2C communication bus.

Features

- VL can be Less than, Greater than or Equal to VCC
- Wide VCC Operating Range: 1.5 V to 5.5 V
- High Speed with 20 Mb/s Guaranteed Data Rate
- Low Bit-to-Bit Skew
- Enable Input and I/O Pins are Overvoltage Tolerant (OVT) to 5.5 V
- Nonpreferential Powerup Sequencing
- PowerOff Protection

Application

ONSEMI

Related Products



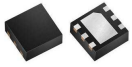
[NTTFS5C670NLTAG](#)

ON Semiconductor, LLC
WDFN-8 / u8FL



[NLV74HC165ADTR2G](#)

ON Semiconductor, LLC
TSSOP-16



[NVMFS5C450NLWFAFT1G](#)

ON Semiconductor, LLC
DFNW5 5x6



[NTMFS6H800NLT1G](#)

ON Semiconductor, LLC
DFN5 5x6, 1.27P (SO-8FL)



[NLV17SZ07DFT2G](#)

ON Semiconductor, LLC
SC70-5



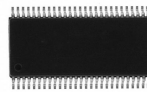
[NTTFS6H854NLTAG](#)

ON Semiconductor, LLC
WDFN-8 / u8FL



[NTTFS6H850NLTAG](#)

ON Semiconductor, LLC
WDFN-8 / u8FL



[NLV74HC165ADR2G](#)

ON Semiconductor, LLC
16-SOIC (0.154",