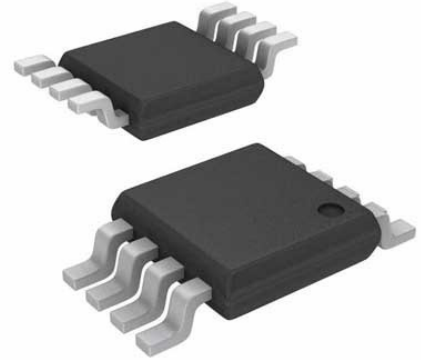


RMS to DC Converter 1.05V 2700uA Automotive 8-Pin MSOP Tube

Manufacturers	<a href="#">Analog Devices, Inc</a>
Package/Case	MSOP-8
Product Type	PMIC - RMS to DC Converters
RoHS	Pb-free Halide free
Lifecycle	



Images are for reference only

Please submit RFQ for LTC1968IMS8#PBF or [Email to us: sales@ovaga.com](mailto:sales@ovaga.com) We will contact you in 12 hours.

[RFQ](#)

## General Description

The LTC1968 is a true RMS-to-DC converter that uses an innovative delta-sigma computational technique. The benefits of the LTC1968 proprietary architecture, when compared to conventional log-antilog RMS-to-DC converters, are higher linearity and accuracy, bandwidth independent of amplitude and improved temperature behavior.

The LTC1968 operates with single-ended or differential input signals and accurately supports crest factors up to 4. Common mode input range is rail-to-rail. Differential input range is 1VPEAK, and offers unprecedented linearity. The LTC1968 allows hassle-free system calibration at any input voltage.

The LTC1968 has a rail-to-rail output with a separate output reference pin providing flexible level shifting; it operates on a single power supply from 4.5V to 5.5V. A low power shutdown mode reduces supply current to 0.1µA.

The LTC1968 is packaged in the space-saving MSOP package, which is ideal for portable applications.

## Features

High Linearity:

0.02% Linearity Allows Simple System Calibration

Wide Input Bandwidth:

Bandwidth to 1% Additional Gain Error: 500kHz

Bandwidth to 0.1% Additional Gain Error: 150kHz

3dB Bandwidth Independent of Input Voltage Amplitude

No-Hassle Simplicity:

True RMS-DC Conversion with Only One External Capacitor

Delta Sigma Conversion Technology

Ultralow Shutdown Current:

0.1 $\mu$ A

Flexible Inputs:

Differential or Single Ended

Rail-to-Rail Common Mode Voltage Range

Up to 1VPEAK Differential Voltage

Flexible Output:

Rail-to-Rail Output

Separate Output Reference Pin Allows Level Shifting

Small Size:

Space Saving 8-Pin MSOP Package

## Application

True RMS Digital Multimeters and Panel Meters

True RMS AC + DC Measurements

## Related Products



### [LT3763EFE](#)

Analog Devices, Inc  
TSSOP28



### [LT1038CK](#)

Analog Devices, Inc  
TO-3



### [LTC4417IUF](#)

Analog Devices, Inc  
QFN-24



### [LTC3440EMS](#)

Analog Devices, Inc  
MSOP10



[LTC1966CMS8#PBF](#)

Analog Devices, Inc  
MSOP-8P



[LTM8045EY#PBF](#)

Analog Devices, Inc  
BGA40



[LTC2990IMS#PBF](#)

Analog Devices, Inc  
10MSOP



[LT4295IUFD#PBF](#)

Analog Devices, Inc  
28-WFQFN